

---

---

# “What’s in a Name?”: Helpful Approaches to Understanding Shakespeare

KORTSCHAK CENTER FOR LEARNING AND CREATIVITY AT THE UNIVERSITY OF SOUTHERN CALIFORNIA

PRESENTED BY JASMINE REVELS

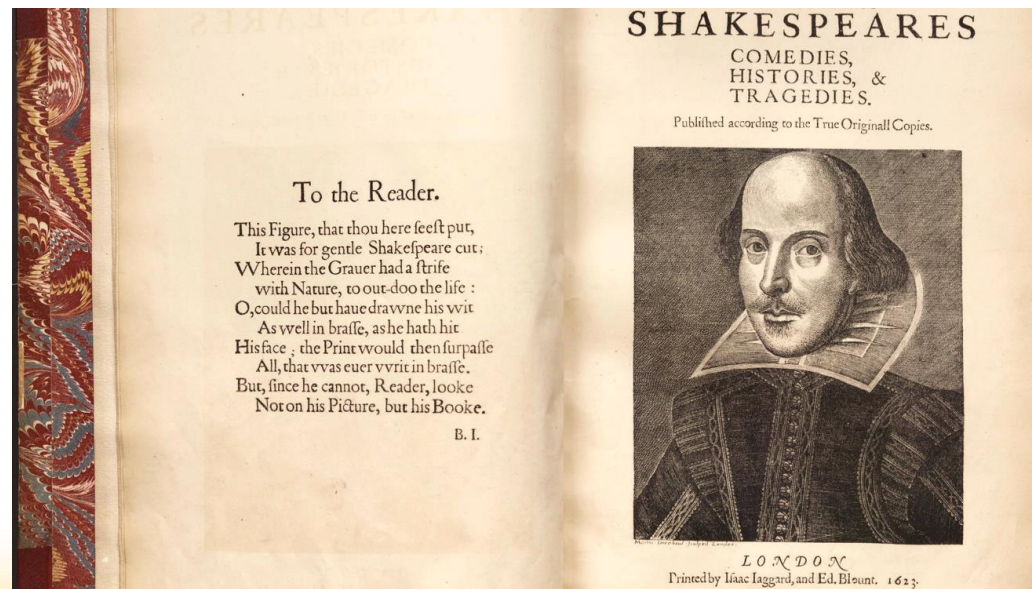
---

---

# Learning Outcomes

By the end of this presentation, you should be able to...

- Know the multiple forms in which Shakespeare is presented, besides in the traditional form of a play
- Find multiple ways to understanding Shakespeare for your class (or for fun!)



Retrieved from Chrome images

# The Difficulty of Shakespeare

- Early Modern English (Shakespearean English) developed in the 16<sup>th</sup> century through the 18<sup>th</sup> century
- Plots can be difficult to comprehend

# Familiarization with Terms

| Early Modern English | Contemporary English |
|----------------------|----------------------|
| Thine                | Your                 |
| Thy                  | Your                 |
| Thee                 | You                  |
| Thou                 | You                  |
| Ye                   | You (Plural)         |



Retrieved from Chrome images

# Shakespeare in Other Forms

- Performance
- Modern text translations
- Film adaptations



Retrieved from Chrome images

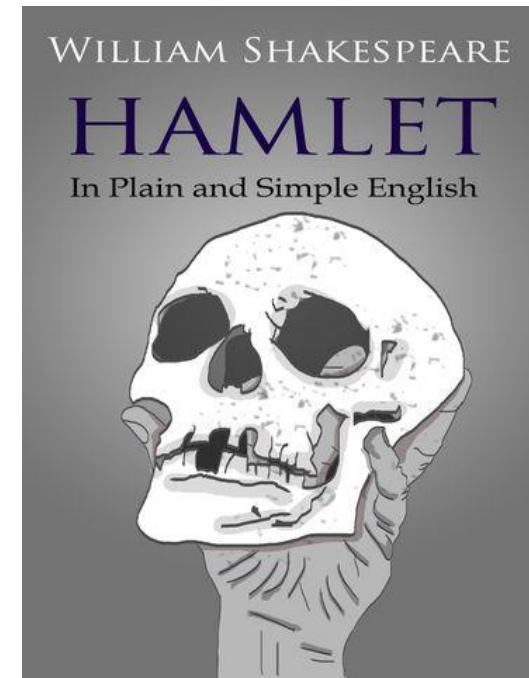
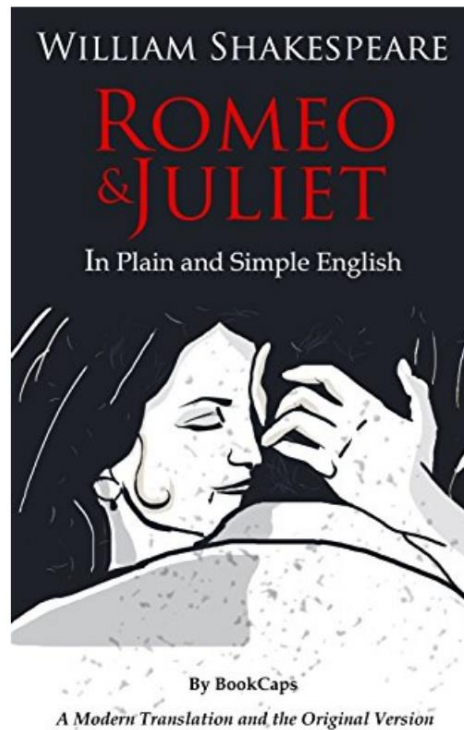
# Performance (Felske, 2005 and Shoemaker, 2013)

- Live plays, i.e. Independent Shakespeare Company in Los Angeles



Retrieved from Chrome Images

# Modern Text Translations (Felske, 2005)

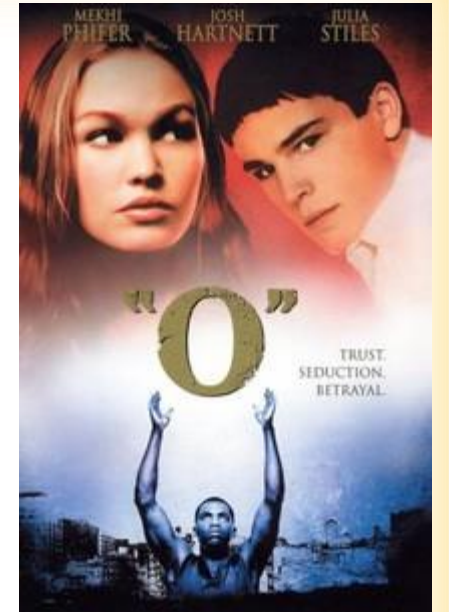


Photos retrieved from Chrome Images

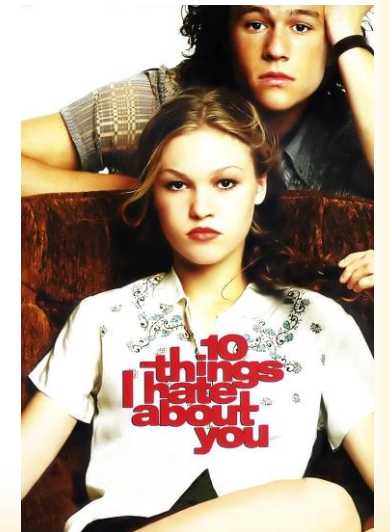


## Film (Shoemaker, 2013)

- Baz Luhrmann's *Romeo and Juliet*
- *O*
- *She's the Man*
- *10 Things I Hate About You*



Photos retrieved from Chrome images





# References

Felske, C. (2005). Beyond the Page: Students as Actor-Readers. *The English Journal*, 95(1), 58-63.

doi:10.2307/30047399

Shoemaker, B. (2013). To read or not to read: Five approaches to teaching shakespeare. *English*

*Journal*, 102(4), 111-114.