

---

## Bricks and Scones

403 N. Larchmont Blvd.  
Los Angeles, CA 90004  
5.5 miles from campus

### Mainly used by:

USC and UCLA students, LA patrons

### Noise level:

Relatively quiet since most people are studying



### Busy/Crowded:

Can get somewhat crowded on the weekends; you usually can find a space

### Hours:

Mon—Thu 7:30am—9pm  
Fri 7:30am—8pm  
Sat & Sun 8am—8pm

### Size:

Relatively large. Outdoor patio and indoor (two story) seating

### Distractions:

Little conversation. Most people are studying or reading

### Study Space:

Outdoor patio seating has outlets. Several tables in lower level indoor seating. Darker upstairs indoor seating gets more crowded.

## Sabor y Cultura

5625 Hollywood Blvd  
Los Angeles, CA 90028  
9 miles from USC

### Mainly used by:

Hollywood residents, LA patrons, students

### Noise level:

Relatively quiet, people studying or on their computers

### Busy/Crowded:

Does not typically get crowded, always has many tables open

### Hours:

Mon—Wed 6:30 am—10 pm  
Thu-Fri 6:30 am—11 pm  
Sat 7:30 am—10 pm  
Sun 7:30 am—10 pm

### Size:

Medium-large open room

### Distractions:

Some conversations but usually fairly quiet

### Study Space:

Lots of small tables and one large table for group study. Art on walls, independent feel but not over the top. Studios yet relaxed setting.



---

## Finding Your Ideal Study Spot: Off campus coffee shops



USC  
**KORTSCHAK CENTER**  
FOR LEARNING AND CREATIVITY

Kortschak Center for Learning and Creativity  
3601 Trousdale Parkway  
Student Union, Suite 311  
Los Angeles, California 90089-0896  
Phone: 213-740-7884  
<http://kortschakcenter.usc.edu>

# An Inside Look: Off-Campus Study Locations

## Nature's Brew

2316 S Union Ave, Los Angeles, CA 90007

**Mainly used by:** USC students, open to the public

**Noise level:** Medium: music is playing in the background, some people might talk, but most are studying

**Busy/Crowded:** Not very crowded because it is still fairly new and not many know about it



**Hours:** M-F 7AM-8PM, Weekends 8AM-8PM

**Phone:** 213-741-9393

**Size:** Medium: lots of tables and chairs

**Distractions:** Music/talking in the background can be distracting

**Study Space:** Great study space. Neutral tones: Brick walls, white chairs, wooden tables. Very clean, simple, yet charming space.

## Coffee Bean & Tea Leaf-Tuscany

3726 S Figueroa St  
Los Angeles, CA 90007-4315  
Across the street from USC

**Mainly used by:** USC students

**Noise Level:** Quiet-average

**Busy/Crowded:** Not very crowded

**Hours:** M-F 6AM—11PM, Weekends 7AM—11PM

**Size:** Large: plenty of tables and chairs

**Distractions:** Traffic noise, low music, some conversation, sound of the water fountain

**Study Space:** Outside space with lots of seating, shade and sun; no outlets outside. Inside has very few outlets and not many tables. Somewhat confined.



## Ignatius Cafe

1451 Dana St  
Los Angeles, CA 90007  
1.4 miles from USC

**Mainly Used by:** Crowd varies, lots of different people from LA

**Noise Level:** Medium: music is fairly loud but most are studying

**Busy/Crowded:** Not very crowded

**Hours:** M—F  
9am—9pm  
Sat 9am—5pm  
Sun 1pm— 9Pm

**Size:** Medium to Large. Lots of tables, chairs, and some couches. Outside sitting space.

**Distractions:** TV on low; side conversations

**Study Space:** There is an indoor and outdoor sitting as well upstairs.

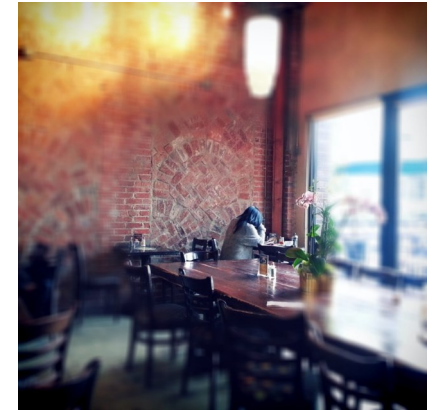


## Urth Caffé

451 S. Hewitt St  
Los Angeles, CA 90013  
5 miles from USC

**Mainly used by:** Crowd varies, lots of different people from LA

**Noise level:** Somewhat loud. Lots of people having lunch and meeting up. There is a quieter side room but can get crowded.



**Busy/Crowded:** Very busy during lunch time

**Hours:** Mon—Thu, Sun 6:00 am—11 pm  
Fri—Sat 6:00 am—12 am

**Size:** Fairly large, lots of indoor and outdoor seating

**Distractions:** Can get busy, lots of people having lunch and conversing

**Study Space:** Outdoor shaded patio and large indoor room with many tables. Café has lots of earth and natural tones. Bustling and energetic space.