

# Directions (from USC)

## Runyon Canyon Loop

US-101N to Hollywood Blvd. Turn left onto Hollywood Blvd, then right on Fuller Avenue. Park at the end of Fuller and enter the well-marked park.

## Los Liones Trail

I-10 W to CA-1 N/PCH . Sharp left onto Sunset Blvd and right onto Los Liones Drive. Parking lot is at the end of the street. From there, follow the trail up to East Topanga Fire Road and follow that to the turnoff for the Parker Mesa Overlook.

## Franklin Canyon Park

I-10 W to N Rexford Dr in Beverly Hills. Right onto N Rexford Dr. Right onto N Beverly Dr. Drive to N Franklin Canyon Dr in LA. Be aware of Stop sign cameras!

## Griffith Park Trails

US-101N to Hollywood Blvd. Turn right onto Hollywood Blvd, left onto N Western Ave, left onto Fern Dell Dr. The hike starts at the Fern Dell picnic area.

## Will Rogers, Rustic Canyon Loop/ Inspiration Point Trail

I-10 W to CA-1 N/PCH . Turn right onto Chautauqua Blvd, right onto Sunset Blvd, left onto Will Rogers State Park Rd. Park near the visitor's center. The hike begins just behind the main ranch house at the park, next to the sign for Inspiration Point Trail.

## Topanga State Park

I-10 W to Chautauqua Blvd. Take Sunset Blvd. to CA-1 N. Turn Right onto CA-1 N. Continue onto CA-27 N.

## Escondido Canyon and Falls

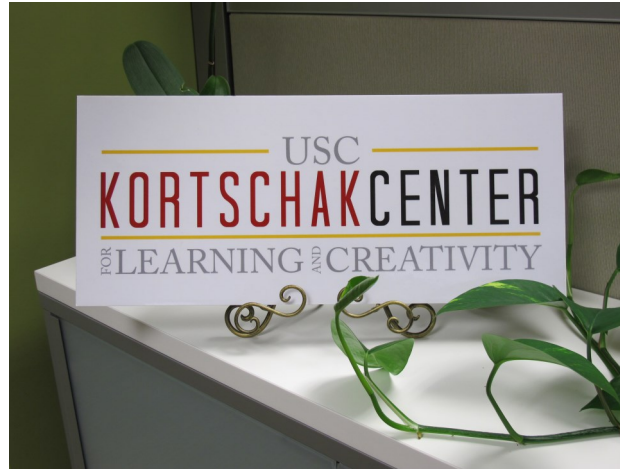
I-10 W to CA-1 N/PCH for 17 miles. Just past Latigo Canyon Road, you'll see the turnoff for East Winding Way where you can park. Follow the paved road toward the mountains for about a mile to the end of East Winding Way. The entrance of Escondido Canyon Park is clearly marked at the end of the pavement.

## Fryman Canyon

US-101 N toward Hollywood. Exit 11A toward Barhman Blvd/ Burbank. Merge onto Cahuenga Blvd E, right on Lakeridge, 1<sup>st</sup> right toward Mulholland Dr. Fryman Canyon Park is accessed from the Nancy Hoover Pohl Overlook on the north side of Mulholland Drive.

## Malibu Creek State Park

I-10W to Lost Hills Rd. Take Exit 33 from US-101 N. Follow Lost Hills Rd and Las Virgenes Rd to Park Entrance Rd.



Brought to you by:

Kortschak Center for Learning and Creativity  
3601 Trousdale Parkway  
Student Union, Suite 311  
Los Angeles, California 90089-0896  
Phone: 213-740-7884  
<http://kortschakcenter.usc.edu>

## Finding Your Ideal Hike: A Guide to Trails in Los Angeles - Part I



USC  
KORTSCHAK CENTER  
FOR LEARNING AND CREATIVITY

# An Inside Look: Hiking in Los Angeles

## Runyon Canyon Loop

**Location:** Hollywood  
**Distance:** About 3 miles round-trip

**Why go:** Great place to people /dog watch, and FREE daily yoga!

**Watch out for:** Parking is free, but may be difficult to find. Be sure you do not park in any reserved spots!



## Los Lions Trail to Parker Mesa Overlook



**Location:** Pacific Palisades  
**Distance:** About 7 miles round-trip  
**Why go:** Incredible views of coastline, mountains, and downtown LA.

**Watch out for:** At times

the trail can become quite narrow and steep.

## Franklin Canyon Park

**Location:** Between the San Fernando Valley and Beverly Hills

**Distance:** Discovery Trail: 0.3mi., Haistain Trail: 2.3mi., Berman Trail: 1mi.

**Why go?:** This park is a part of Los Angeles history

**Watch out for:** You must stay on the trail and preserve the park



## Griffith Park Trails

**Location:** Los Angeles  
**Distance:** 53 mile network of trails

**Why go:** View from Griffith Observatory, the Hollywood sign and the LA Basin. There is also plenty of parking!

**Watch out for:** People riding by on horseback.



## Will Rogers, Rustic Canyon Loop/Inspiration Point Trail



**Location:** Santa Monica  
**Distance:** About 6 miles round-trip  
**Why Go:** The peace and quiet! And, explore what was once the private ranch of a Hollywood star .

**Watch out for:** \$12 Parking.

## Topanga State Park

**Location:** Located in the cliffs and canyons of the Santa Monica Mountains,

**Distance:** 10.3 miles, all-day hike

**Why go?:** Topanga State Park features 36 miles of trails through open grassland, live oaks and spectacular views of the Pacific Ocean.

**Watch out for:** No dogs allowed, State Park so must call ahead.



## Escondido Canyon and Falls



**Location:** Malibu  
**Distance:** 4.2 miles round-trip  
**Why go:** The waterfall at the end of the trail and a great workout!

**Watch out for:** Parking can be difficult to find, but you can admire the houses as you

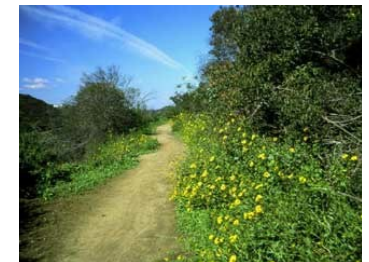
walk towards the trail.

## Fryman Canyon

**Location:** Hollywood Hills

**Distance:** 3 miles

**Why go?:** Quieter alternative to Runyon Canyon and opportunities for side-trail hiking.



## Malibu Creek State Park

**Location:** Malibu Creek State Park is a sprawling 10,000 acre park that protects 25-mile long Malibu Creek, the largest watershed in the Santa Monica Mountains.



**Distance:** 7.9 miles, half-day

**Why go?:** The creek itself is somewhat unusual in that it has cut a path through hard volcanic rock instead of the softer sedimentary rocks

north of the Goat Buttes, which makes for some spectacular scenery during any time of the year.

**References:** [www.hike-la.com](http://www.hike-la.com)  
[discoverlosangeles.com](http://discoverlosangeles.com)